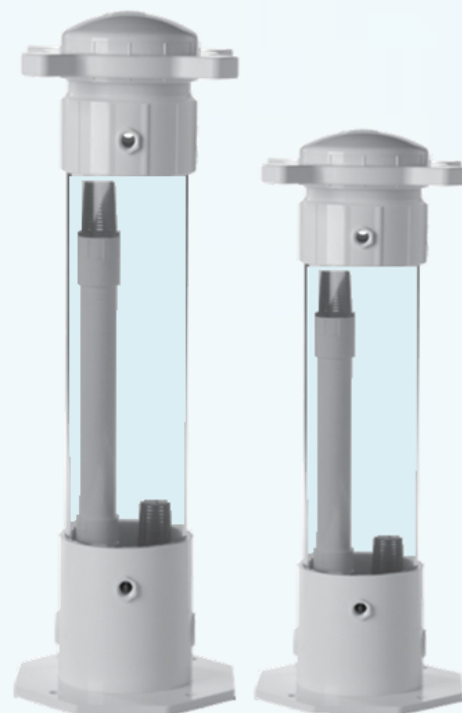


See-through biomate feeder series

Biomate see-through feeders are a convenient and safe way of introducing solid biocide and other corrosive chemicals into chilled water circulating loops. Constructed of clear UV-PVC 6" body & cap, allows the chemicals level to be viewed without opening the cap.

O-Ring sealed large open wide-mouth top and wide bolt-down base, the Biomate feeder series come standard with 1" inlet and outlet side union ports, pressure relief valve and optional uPVC piping kit to complete piping installation.

Suitable for swimming-pools, spas, water features, cooling towers and other industrial water applications.



Model	Capacity Kg	Max Pressure & Temperature	Dim In./mm	Height In./mm	Cap size In./mm
BIOMATE 2000-15	6.8	8.6 bar @ 38°C	6"/152.4	21"/533	6"/152.4
BIOMATE 2000-25	11.3	8.6 bar @ 38°C	6"/152.4	33"/838	6"/152.4
BIOMATE 2000-50	22.7	8.6 bar @ 38°C	6"/152.4	57"/1448	6"/152.4

Installation Diagram & Optional plumbing kit

uPVC fittings for operation to 8.6 bar at 38°C. Kit contains: Tough Polysulfone Flow-water (USA) 5 to 37.5 LPM, two unions, three ball valves, two tees, two 90-degree elbows, and required nipples and plugs.



Key Features

- Easy-open wide-mouth top
- 6" body See-through design
- Top opening threaded, O-ring closure
- Pressure relief valve
- Bottom inlet and drain ports, 1" unions for mid-high flow systems
- Wide bolt-down base

Optional Items

- Mini Motorized Ball valve
- uPVC solenoid valve
- In-line strainer, 20 or 50 mes