

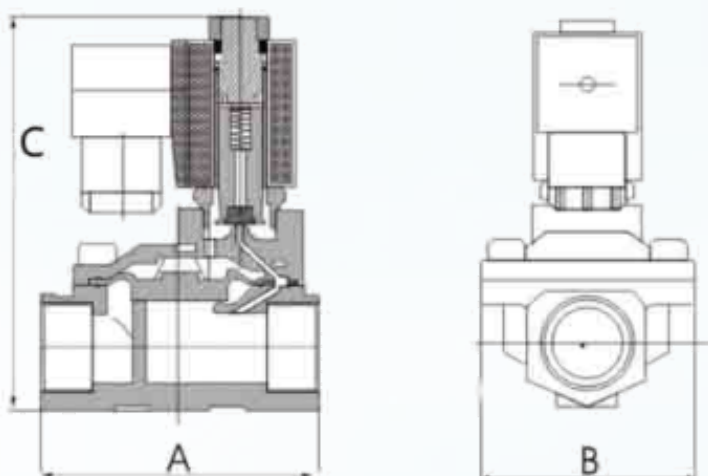
Key Features

- ✓ Forged body for durability and high pressure applications
- ✓ Valve body Material: SS316
- ✓ Two ways, normally closed
- ✓ Working Pressure 0.3 ~ 16 Bar
- ✓ Rated protection: IP65, watertight electrical enclosure
- ✓ Closing feature minimizes water-hammer on shut-off
- ✓ Working Voltage: AC230V, AC240V (50Hz/60Hz), DC24V, AC24V



Model	Size	(mm)	Pressure AC / DC	Length (L) mm	Width (W) mm	Height (H) mm	Weight (Kg)
DHD31SL-10	3/8"	10	0.3 ~ 16 Bar	66	48	107	0.62
DHD31SL-15	1/2"	15	0.3 ~ 16 Bar	66	48	107	0.59
DHD31SL-20	3/4"	20	0.3 ~ 16 Bar	75	58	112	0.75
DHD31SL-25	1"	25	0.3 ~ 16 Bar	96	70	131	1.01
DHD31SL-32	1 1/4"	32	0.3 ~ 16 Bar	131	96	146	2.35
DHD31SL-40	1 1/2"	40	0.3 ~ 16 Bar	131	96	146	2.25
DHD31SL-50	2"	50	0.3 ~ 16 Bar	165	120	167	3.96

Dimensions



Specifications

- Rated protection: IP65
- Sealing Material: NBR
- Temperature: From -5 to 80°C
- Durability: Water, Liquid, Air, Light oil
- Working Pressure: 0.3 ~ 16 Bar
- Optional sealing: Viton/ EPDM From -10 to 120°C/ 130°C