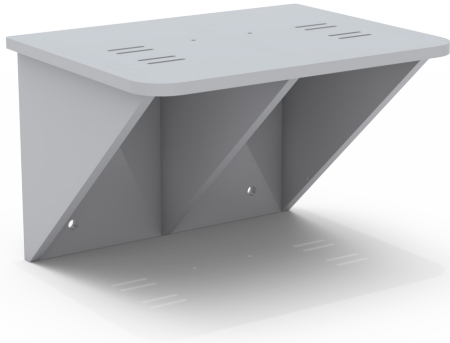


# KIT-PSM

## Wall Mount Bracket

---



### Features

- > Tough Chemical Resistant HDPE Bracket
- > Compatible with 1, 2, 3, 4 Series Blue-White Pumps
- > Simple Installation
- > Ergonomic
- > Easy to order with pumps

Video link:



## Highlights

### Material

Welded 1/2" HDPE  
Plastic Construction

### Chemical Resistant

Compatible with most  
acids and alkalis

### Simple

One size fits all

### Mounting Hardware

Comes with Four (4) SS  
1/2" mounting bolts

### Ergonomic

Mount at any height

### Warranty

1 Year



# Engineering Specifications

KIT-PSM

## General Operation

### Compatible with Pump Models

A1, A2, A3, A4 Flex-Flo® Peristaltic Pumps

M1, M2, M3, M4 Flex-Flo® Peristaltic Pumps

C2, C3, CD1, CD3 Chem-Feed® Diaphragm Pumps

MC2, MC3, MD1, MD3 Chem-Feed® Diaphragm Pumps

### Max Capacity

150 lbs (68 kg)

### Mounting Hardware

Four (4) 3/8" dia. x 2-3/4" long stainless steel anchor bolts



## Dimensions

Dim	Inch	cm
A	12.38"	31.4
B	14.75"	37.5
C	10.47"	26.6
D	7.20"	18.3
E	10.10"	25.7
F	0.5" dia.	1.3 dia.

