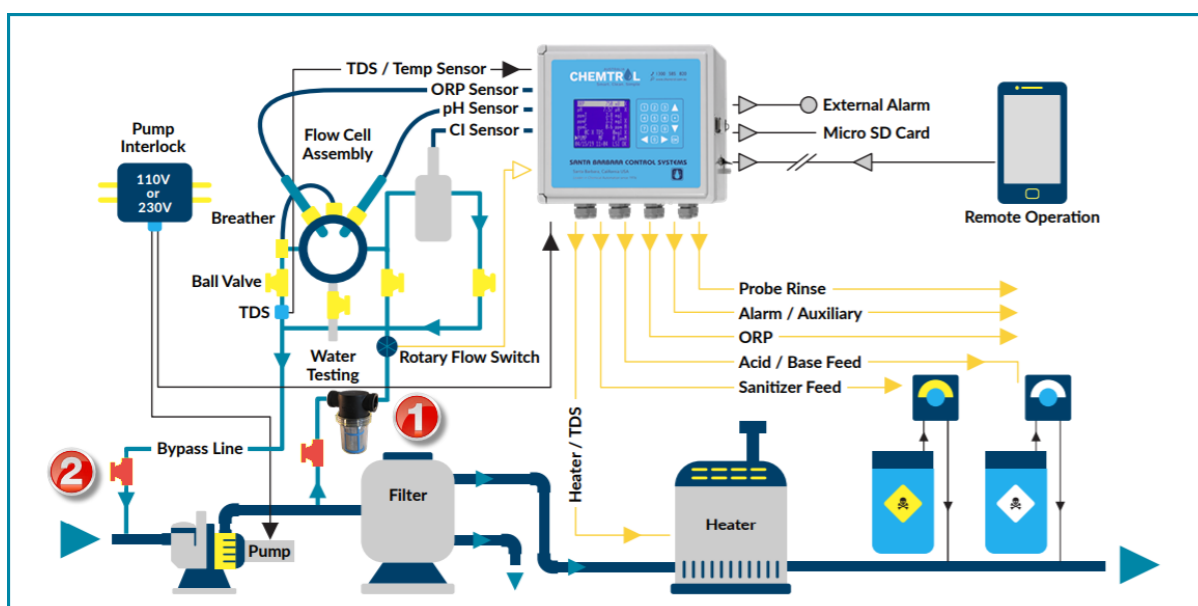


## CHEMTROL® Installation Diagram Guidance

Pool and Spa programmable controller (PC) range installation:

For optimal installation, it is recommended to mount the controller backboard on the right-hand side, with the plumbing manifold positioned on the left.

Alternatively, another viable option is to mount the plumbing manifold below the controller, maintaining an approximate 300mm gap between these two PVC backboards. This gap is essential for the servicing and maintenance of the chlorine (ppm) sensor.



### Bypass line assembly (INLET)

Please connect to the discharge of the main recirculation filter pump, incorporating an inline strainer to ensure water cleanliness before sensor sampling. Ensure that the system maintains a maximum flow of 10 liters per minute (l/m) and a minimum flow of no less than 4 liters per minute (l/m).

**\*1 – Please ensure the installation includes an additional isolation valve positioned before the inline strainer. This valve is essential for facilitating maintenance and backwash processes, allowing for efficient servicing of the system.**

### Bypass line assembly (OUTLET)

Please ensure the connection is made before the pool main filter pump on the suction side. This arrangement is designed to promote consistent water flow out of the manifold.

**\*2 – It is crucial to incorporate an additional isolation valve into the system to facilitate maintenance and backwash processes. This valve will ensure efficient servicing of the system when needed.**

Note: As each pool may have variations in filtration and recirculation equipment, we recommend consulting with a CHEMTROL® representative to determine the optimal connection for plumbing inlet/outlet on your facility.

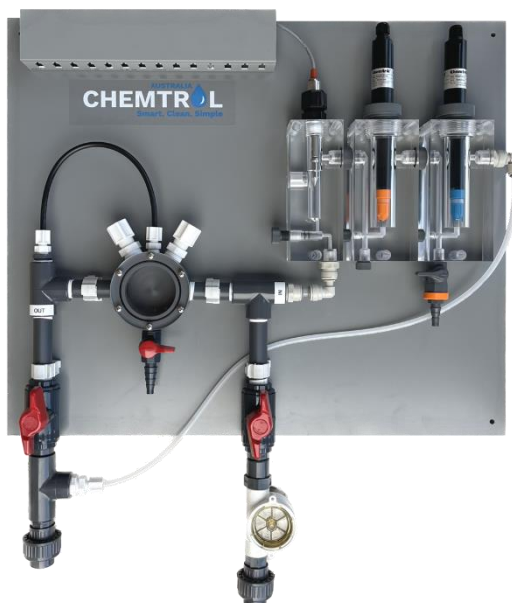
### Model 1 - CHEMTROL® Flow cell assembly (FCA)

15mm (1/2") pipe connection designed for probes holder fitting with a single chlorine sensor



### Model 2 - CHEMTROL® Flow cell assembly (FCA)

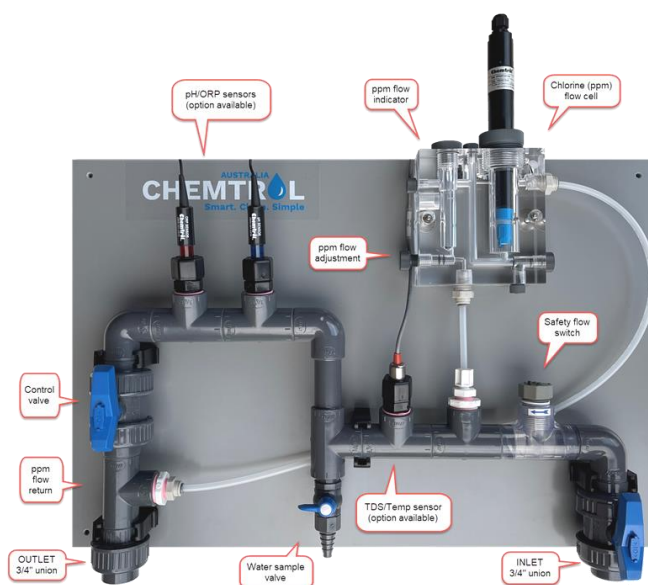
15mm (1/2") pipe connection designed for probes holder fitting with dual chlorine sensors



Model 3 - CHEMTROL® By-pass line assembly with monobloc cell housing  
 Inlet & Outlet service valves – Quick connect 3/8" fitting



Model 4 - CHEMTROL® Flow cell assembly (FCA)  
 20mm (3/4") pipe connection designed for probes holder fitting with a single chlorine sensor



Controller with 2x wired dosing pumps ready for liquid Acid & Chlorine